

JACKSON LAND SURVEYING, LLC  
CA-0615-LS

DRAWN BY: K.HARRIS	DATE 01/16/14	376 JACKSON BOTTOMS ROAD GOODWATER, AL TEL. NO. (256) 234-5200 FAX NO. (256) 839-9790
CLIENT: KING	DEED REF. B796 P.132 B429 P.225 B919 P.373	
SCALE 1"=200'	BOUNDARY SURVEY	PROJECT NO. 14-K-21

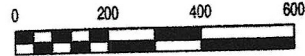
LEGEND

- (M) MEASURED
- (R) RECORD
- 1/2" CAPPED REBAR SET (STAMPED CA-615-LS)
- CORNER FOUND
- CALCULATED POINT
- △ POWER POLE
- OVERHEAD UTILITIES

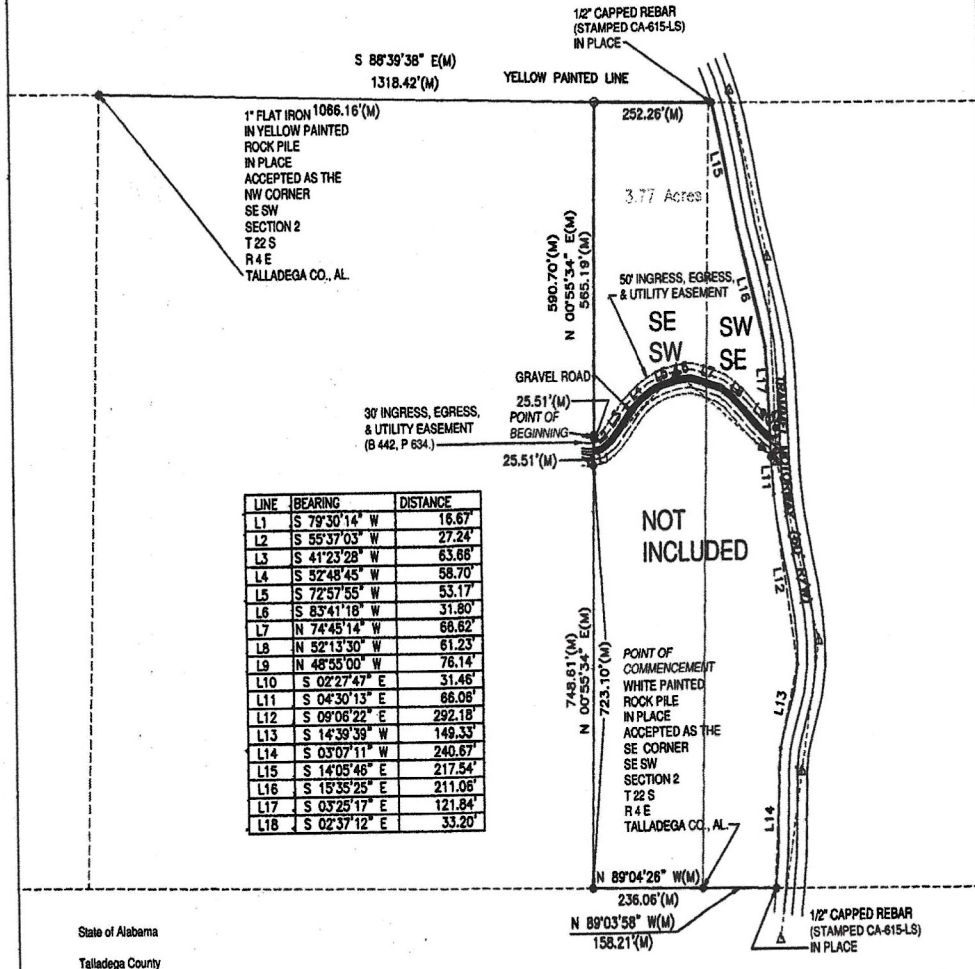


SURVEYOR NOTES:

- 1: NOT VALID WITHOUT ORIGINAL SIGNATURE. ALL COPIES AND FAXES ARE INVALID AND MAY NOT BE USED FOR ANY PURPOSE.
- 2: COPYRIGHT JACKSON LAND SURVEYING, 2014. DISTRICTS NOT TO BE COPIED OR REPRODUCED WITHOUT WRITTEN CONSENT.
- 3: SURVEY NOT TO BE HANDED OUT TO A THIRD PARTY.
- 4: SURVEY IS VALID FOR 30 DAYS FROM SIGNED DATE.



DEED 1015 640



LINE	BEARING	DISTANCE
L1	S 79°30'14" W	16.67'
L2	S 55°37'03" W	27.24'
L3	S 41°23'28" W	63.68'
L4	S 32°48'45" W	58.70'
L5	S 72°57'55" W	53.17'
L6	S 83°41'18" W	31.80'
L7	N 74°45'14" W	66.62'
L8	N 52°13'30" W	61.23'
L9	N 48°55'00" W	76.14'
L10	S 02°27'47" E	31.46'
L11	S 04°30'13" E	66.08'
L12	S 08°06'22" E	292.18'
L13	S 14°39'39" W	149.33'
L14	S 03°07'11" W	240.67'
L15	S 14°05'46" E	217.54'
L16	S 15°35'25" E	211.06'
L17	S 03°25'17" E	121.84'
L18	S 02°37'12" E	33.20'

State of Alabama  
Talladega County

I, Kelvin L. Harris, a licensed land surveyor in the State of Alabama, hereby state that the foregoing is a map of part of the Southwest 1/4 of the Southeast 1/4 and a part of the Southeast 1/4 of the Southwest 1/4 of Section 2, Township 22 South, Range 4 East, Talladega County, Alabama, being more particularly described as follows: Commence at a white painted rock pile in place, accepted as the Southeast corner of the Southeast 1/4 of the Southwest 1/4 of Section 2, Township 22 South, Range 4 East, Talladega County, Alabama; thence N 89°04'26" W a distance of 236.06' to a 1/2" capped rebar in place (stamped CA-615-LS); thence N 00°55'34" E a distance of 723.10' to a 1/2" capped rebar in place (stamped CA-615-LS) located on the South boundary of a 50' ingress, egress, and utility easement; thence continue N 00°55'34" E a distance of 25.51' to a point in the centerline of said easement; thence continue N 00°55'34" E a distance of 25.51' to a 1/2" capped rebar set (stamped CA-615-LS), located on the North boundary of a 50' ingress, egress, and utility easement, said point being the point of beginning. From this beginning point continue N 00°55'34" E a distance of 585.19' to a 1/2" capped rebar set (stamped CA-615-LS); thence S 88°39'36" E a distance of 252.26' to a 1/2" capped rebar set (stamped CA-615-LS), located on the Westery right of way of Trammel Motorway; thence along said right of way a chord bearing of S 14°05'46" E a chord distance of 217.54'; thence a chord bearing of S 15°35'25" E a chord distance of 211.06'; thence a chord bearing of S 03°25'17" E a chord distance of 121.84' to a 1/2" capped rebar set (stamped CA-615-LS) located on the North boundary of a 50' ingress, egress, and utility easement; thence a chord bearing of S 02°37'12" E a chord distance of 33.20' to the intersection of the Westery right of way of Trammel Motorway and the centerline of a 50' ingress, egress, and utility easement; thence proceed along said centerline the following calls: N 48°55'00" W a distance of 76.14'; thence N 52°13'30" W a distance of 61.23'; thence N 74°45'14" W a distance of 66.62'; thence S 83°41'18" W a distance of 31.80'; thence S 72°57'55" W a distance of 53.17'; thence S 52°48'45" W a distance of 58.70'; thence S 41°23'28" W a distance of 63.68'; thence S 55°37'03" W a distance of 27.24'; thence S 79°30'14" W a distance of 16.67'; back to the point of beginning, containing 3.77 acres, more or less.

The above described property is subject to a 30' ingress, egress, and utility easement as recorded in the Office of Probate of Talladega County, Alabama in deed book 442, at page 634, and a 50' ingress, egress, and utility easement, being 25' in equal width on each side of the following described centerline; Commence at a white painted rock pile in place, accepted as the Southeast corner of the Southeast 1/4 of the Southwest 1/4 of Section 2, Township 22 South, Range 4 East, Talladega County, Alabama; thence proceed N 89°04'26" W a distance of 236.06' to a 1/2" capped rebar in place (stamped CA-615-LS); thence continue N 00°55'34" E a distance of 723.10' to a 1/2" capped rebar set (stamped CA-615-LS) located on the South boundary of a 50' ingress, egress, and utility easement; thence continue N 00°55'34" E a distance of 25.51' to a point in the centerline of said easement, said point being the point of beginning. From this beginning point proceed along said centerline N 79°30'14" W a distance of 16.67'; thence N 55°37'03" E a distance of 27.24'; thence N 41°23'28" E a distance of 63.68'; thence N 52°48'45" E a distance of 58.70'; thence N 72°57'55" E a distance of 53.17'; thence N 83°41'18" E a distance of 31.80'; thence N 74°45'14" E a distance of 66.62'; thence S 52°13'30" E a distance of 61.23'; thence S 48°55'00" E a distance of 76.14' to the intersection of said centerline with the West right of way of Trammel Motorway, and the termination of said easement.

I further state that all parts of this survey and drawing have been completed in accordance with the current requirements of the Standards of Practice for Surveying in the State of Alabama to the best of my knowledge, information, and belief.

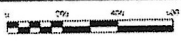
According to my survey, this the 16th day of January, 2014.

*Kevin L. Harris*  
Kelvin L. Harris, Licensed Land Surveyor #29409, Alabama



**JACKSON LAND SURVEYING, LLC**  
**CA-0615-LS**

DRAWN BY: R.HARRIS DATE: 03/18/14  
 CLIENT: 378 JACKSON BOTTOMS ROAD  
 GADSDEN, AL 36033  
 SCALE: 1"=200' BOUNDARY SURVEY PROJECT NO.: 14-K-00C



**LEGEND**

AN UNCALCULATED  
 OR RECORD  
 1/2" CAPPED REBAR SET  
 (STAMPED CA 415-LS)  
 CONCRETE FOUND  
 CALCULATED POINT  
 POWERED FILE  
 OVERHEAD UTILITY

**ADVERSE NOTES**

1. THIS SURVEY IS BASED ON THE ASSUMPTION THAT ALL PLATS AND RECORDS REFERRED TO ARE CORRECT AND ACCURATE. THE SURVEYOR HAS NOT CONDUCTED A TITLE SEARCH OR A RECORD SEARCH TO VERIFY THE ACCURACY OF THE INFORMATION PROVIDED.

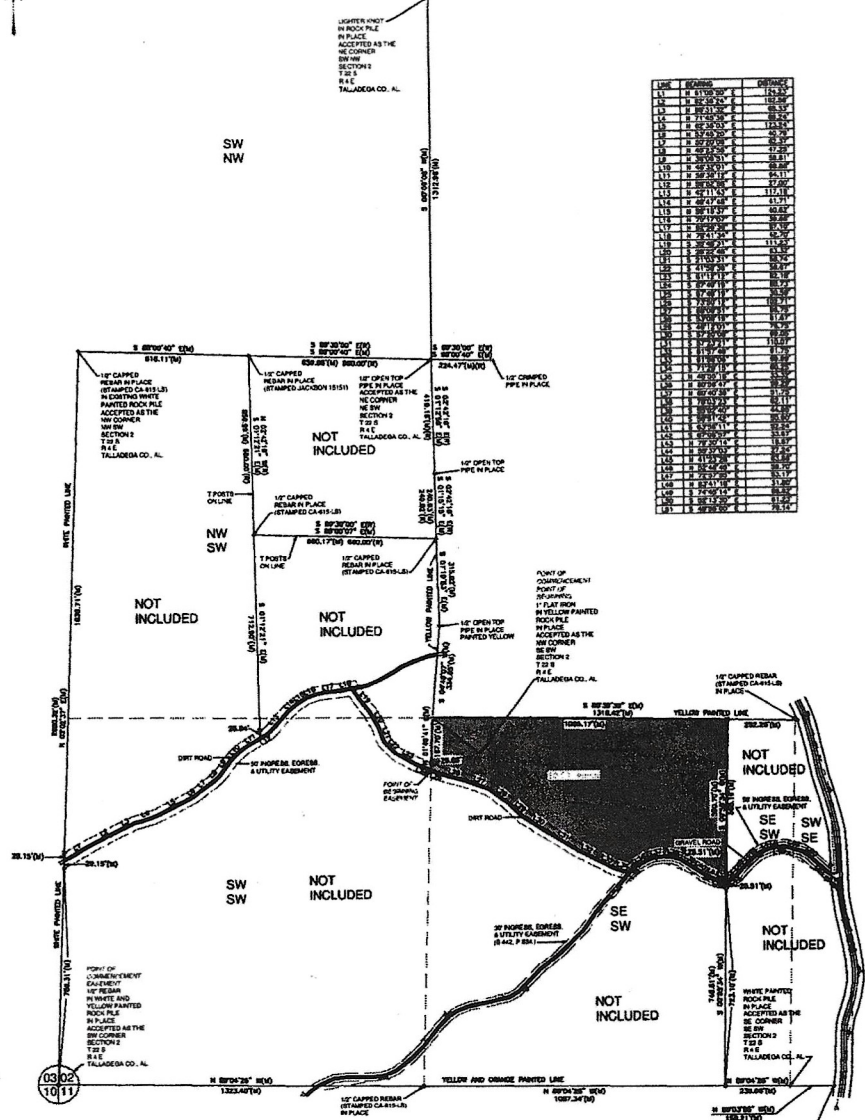
2. THE SURVEYOR HAS NOT CONDUCTED A FIELD CHECK OF THE RECORDS REFERRED TO IN THIS SURVEY.

3. THE SURVEYOR HAS NOT CONDUCTED A FIELD CHECK OF THE RECORDS REFERRED TO IN THIS SURVEY.



RIGHTER ANGLE  
 IN ROCK FILE  
 IN PLACE  
 ACCEPTED AS THE  
 NE CORNER  
 BETWEEN  
 SECTION 1  
 T 2 S  
 R 4 E  
 TALLADEGA CO. AL.

LINE	BEARING	DISTANCE
1	N 89°52'00" E	124.17(10)
2	S 89°52'00" W	124.17(10)
3	S 89°52'00" W	124.17(10)
4	N 89°52'00" E	124.17(10)
5	N 89°52'00" E	124.17(10)
6	S 89°52'00" W	124.17(10)
7	N 89°52'00" E	124.17(10)
8	S 89°52'00" W	124.17(10)
9	N 89°52'00" E	124.17(10)
10	S 89°52'00" W	124.17(10)
11	N 89°52'00" E	124.17(10)
12	S 89°52'00" W	124.17(10)
13	N 89°52'00" E	124.17(10)
14	S 89°52'00" W	124.17(10)
15	N 89°52'00" E	124.17(10)
16	S 89°52'00" W	124.17(10)
17	N 89°52'00" E	124.17(10)
18	S 89°52'00" W	124.17(10)
19	N 89°52'00" E	124.17(10)
20	S 89°52'00" W	124.17(10)
21	N 89°52'00" E	124.17(10)
22	S 89°52'00" W	124.17(10)
23	N 89°52'00" E	124.17(10)
24	S 89°52'00" W	124.17(10)
25	N 89°52'00" E	124.17(10)
26	S 89°52'00" W	124.17(10)
27	N 89°52'00" E	124.17(10)
28	S 89°52'00" W	124.17(10)
29	N 89°52'00" E	124.17(10)
30	S 89°52'00" W	124.17(10)
31	N 89°52'00" E	124.17(10)
32	S 89°52'00" W	124.17(10)
33	N 89°52'00" E	124.17(10)
34	S 89°52'00" W	124.17(10)
35	N 89°52'00" E	124.17(10)
36	S 89°52'00" W	124.17(10)
37	N 89°52'00" E	124.17(10)
38	S 89°52'00" W	124.17(10)
39	N 89°52'00" E	124.17(10)
40	S 89°52'00" W	124.17(10)
41	N 89°52'00" E	124.17(10)
42	S 89°52'00" W	124.17(10)
43	N 89°52'00" E	124.17(10)
44	S 89°52'00" W	124.17(10)
45	N 89°52'00" E	124.17(10)
46	S 89°52'00" W	124.17(10)
47	N 89°52'00" E	124.17(10)
48	S 89°52'00" W	124.17(10)
49	N 89°52'00" E	124.17(10)
50	S 89°52'00" W	124.17(10)
51	N 89°52'00" E	124.17(10)
52	S 89°52'00" W	124.17(10)
53	N 89°52'00" E	124.17(10)
54	S 89°52'00" W	124.17(10)
55	N 89°52'00" E	124.17(10)
56	S 89°52'00" W	124.17(10)
57	N 89°52'00" E	124.17(10)
58	S 89°52'00" W	124.17(10)
59	N 89°52'00" E	124.17(10)
60	S 89°52'00" W	124.17(10)
61	N 89°52'00" E	124.17(10)
62	S 89°52'00" W	124.17(10)
63	N 89°52'00" E	124.17(10)
64	S 89°52'00" W	124.17(10)
65	N 89°52'00" E	124.17(10)
66	S 89°52'00" W	124.17(10)
67	N 89°52'00" E	124.17(10)
68	S 89°52'00" W	124.17(10)
69	N 89°52'00" E	124.17(10)
70	S 89°52'00" W	124.17(10)
71	N 89°52'00" E	124.17(10)
72	S 89°52'00" W	124.17(10)
73	N 89°52'00" E	124.17(10)
74	S 89°52'00" W	124.17(10)
75	N 89°52'00" E	124.17(10)
76	S 89°52'00" W	124.17(10)
77	N 89°52'00" E	124.17(10)
78	S 89°52'00" W	124.17(10)
79	N 89°52'00" E	124.17(10)
80	S 89°52'00" W	124.17(10)
81	N 89°52'00" E	124.17(10)
82	S 89°52'00" W	124.17(10)
83	N 89°52'00" E	124.17(10)
84	S 89°52'00" W	124.17(10)
85	N 89°52'00" E	124.17(10)
86	S 89°52'00" W	124.17(10)
87	N 89°52'00" E	124.17(10)
88	S 89°52'00" W	124.17(10)
89	N 89°52'00" E	124.17(10)
90	S 89°52'00" W	124.17(10)
91	N 89°52'00" E	124.17(10)
92	S 89°52'00" W	124.17(10)
93	N 89°52'00" E	124.17(10)
94	S 89°52'00" W	124.17(10)
95	N 89°52'00" E	124.17(10)
96	S 89°52'00" W	124.17(10)
97	N 89°52'00" E	124.17(10)
98	S 89°52'00" W	124.17(10)
99	N 89°52'00" E	124.17(10)
100	S 89°52'00" W	124.17(10)



**State of Alabama**  
**Talladega County**

I, **Kalen L. Harris**, a Licensed Land Surveyor in the State of Alabama, hereby certify that the foregoing is a true and correct copy of the original plat of the Survey of the Southwest 1/4 of Section 23 South, Range 14 East, Talladega County, Alabama, being more particularly described as follows: Commencing at 11' 58' 10\"/>

DEED 1018 126