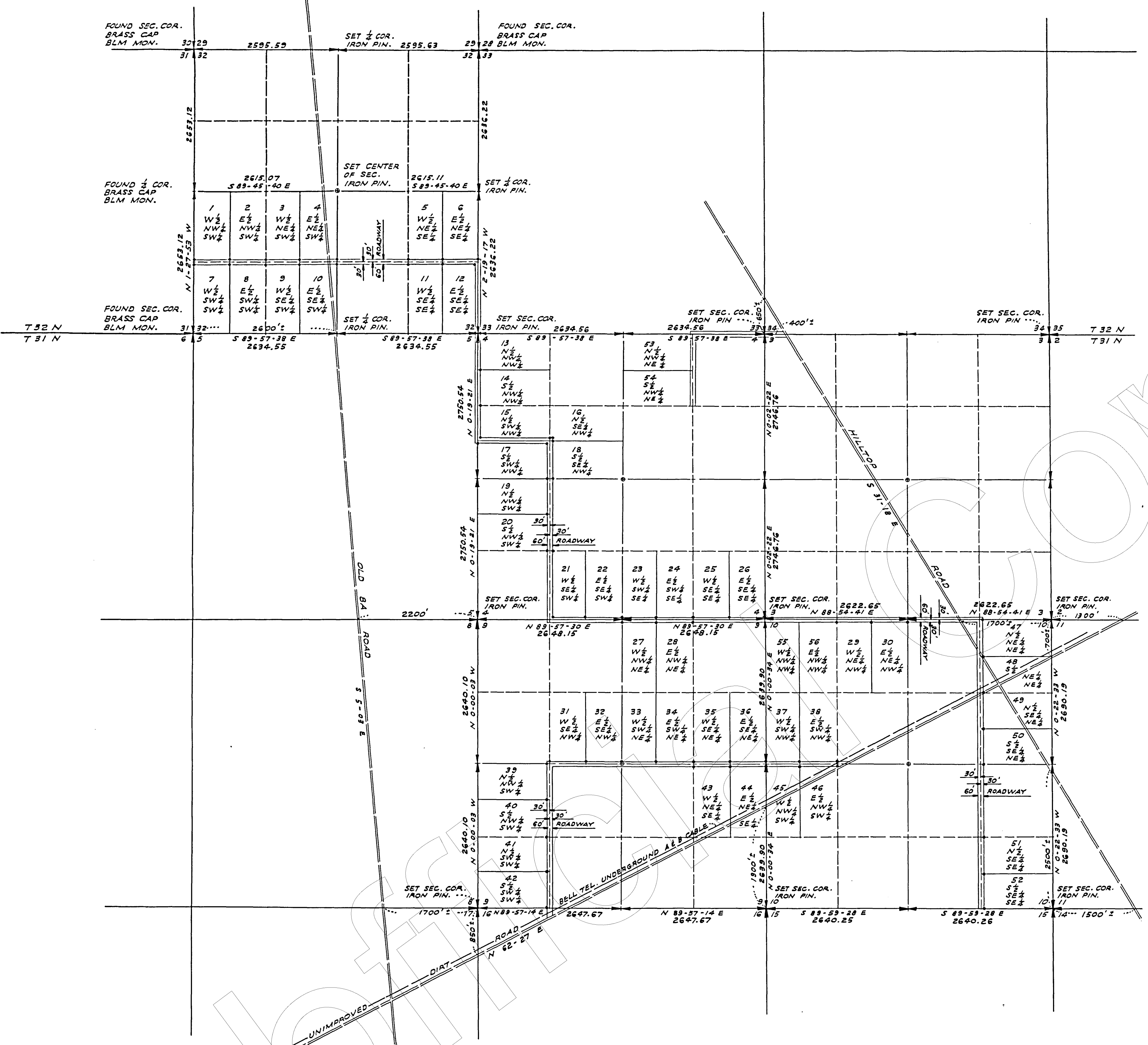


DRAWING NUMBER
6-24-67

DRAWING NUMBER
49030

DRAWING NUMBER

DRAWING NUMBER



NOTE:
ALL ROADS ARE PRIVATE AND 60' IN WIDTH (30' EACH SIDE OF E) AS INDICATED ON FILED MAP.

STATE OF NEVADA, SS.
COUNTY OF LANDER.

THE UNDERSIGNED HEREBY CERTIFIES THAT THIS PLAT IS A TRUE AND ACCURATE MAP OF THE LANDS REPRESENTED THEREON, SURVEYED BY HIM OR UNDER HIS SUPERVISION AND LAID OUT INTO LOTS, BLOCKS, STREETS AND PUBLIC PLACES AT THE INSTANCE OF JOHN NEWELL; THAT THE LOCATION OF SAID LOTS, BLOCKS, STREETS AND PUBLIC PLACES HAVE BEEN DEFINITELY ESTABLISHED AND PERPETUATED IN ACCORDANCE WITH THE LAW AS SHOWN HEREON; THAT THE LOTS, BLOCKS, STREETS AND PUBLIC PLACES SHOWN HEREON ARE SITUATED WHOLLY WITHIN SECTION 32, T32N, R45E; AND SECTIONS 4, 5, 9, 10, T31N, R45E, M.D.B.&M., AND THAT THE SURVEY WAS COMPLETED ON THE 7TH DAY OF JULY, 1967.

Anthony Mango
ANTHONY MANGO. A.L.S. 1873

FILE NO. 49030

FILED FOR RECORD AT THE REQUEST OF NEVADA TITLE GUARANTY COMPANY THIS 24TH DAY OF JULY, 1967 AT 45 MINUTES PAST O'CLOCK P.M., IN THE RECORDS OF LANDER COUNTY, NEVADA.

FEE: \$3.00

Edwin M. Adams
COUNTY RECORDER.

THE MALONE ENGINEERS
RENO, NEVADA

RECORD OF SURVEY
OF NU-TOWN TRACTS
BATTLE MOUNTAIN
T31N - R45E & T32N - R45E
M.D.B.&M.

SCALE: 1" = 1000 FT. DATE APR. 1967

REF: SEE ALSO DWG. 6624 AND 6624A. FILE 49030 M. SEP 1 1968 6714