

Market PULSE

April 2016



ORLANDO REGIONAL
REALTOR[®]
ASSOCIATION

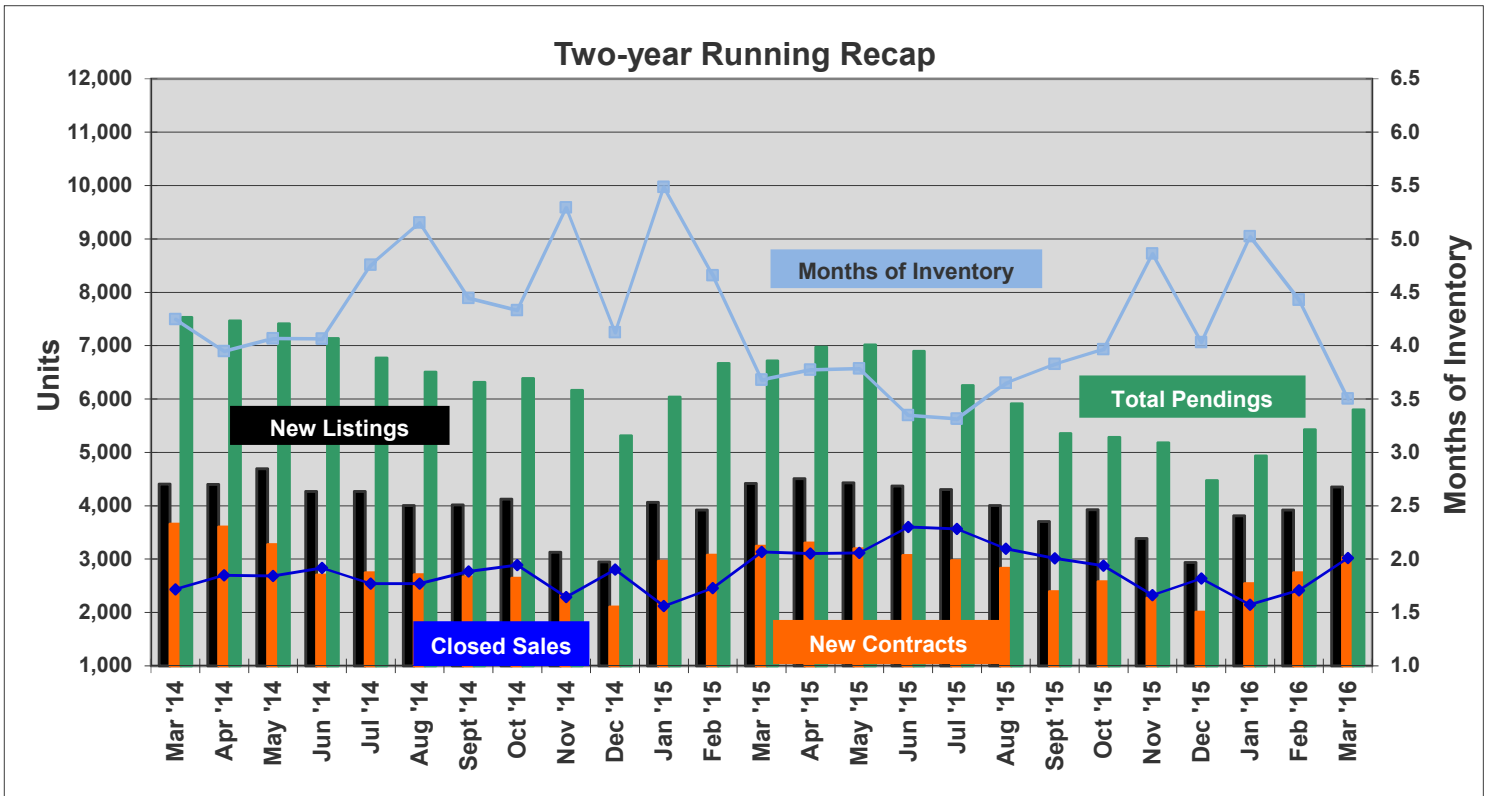


| ORRA Originated Sales | Average Mtg Rate | Total Inventory ** | Active With Contract | New Listings | New Contracts | Under Contract | Back on Market | Expired | Withdrawn | Sales Closed | Days on Market |
|-----------------------|------------------|--------------------|----------------------|--------------|---------------|----------------|----------------|---------|-----------|--------------|----------------|
| Mar '14 | 4.43% | 10,343 | 526 | 4,406 | 3,659 | 7,530 | 812 | 330 | 906 | 2,435 * | 76 * |
| Apr '14 | 4.39% | 10,647 | 469 | 4,401 | 3,604 | 7,465 | 848 | 324 | 849 | 2,698 * | 77 * |
| May '14 | 4.16% | 10,908 | 694 | 4,693 | 3,275 | 7,407 | 824 | 310 | 921 | 2,683 * | 73 * |
| Jun '14 | 4.17% | 11,518 | 762 | 4,267 | 2,701 | 7,135 | 1,122 | 450 | 895 | 2,834 * | 71 * |
| Jul '14 | 4.17% | 12,093 | 764 | 4,265 | 2,745 | 6,768 | 1,191 | 368 | 907 | 2,542 * | 73 * |
| Aug '14 | 4.16% | 13,084 | 839 | 4,002 | 2,711 | 6,507 | 1,142 | 344 | 886 | 2,540 * | 69 * |
| Sept '14 | 4.20% | 12,316 | 768 | 4,017 | 2,666 | 6,315 | 1,176 | 332 | 942 | 2,770 * | 70 * |
| Oct '14 | 4.05% | 12,507 | 706 | 4,125 | 2,645 | 6,384 | 1,100 | 355 | 960 | 2,888 * | 72 * |
| Nov '14 | 4.01% | 12,121 | 705 | 3,128 | 2,341 | 6,161 | 982 | 342 | 831 | 2,290 * | 77 * |
| Dec '14 | 3.86% | 11,557 | 634 | 2,947 | 2,101 | 5,310 | 725 | 651 | 849 | 2,803 * | 79 * |
| Jan '15 | 3.67% | 11,631 | 717 | 4,066 | 2,960 | 6,034 | 643 | 282 | 913 | 2,120 * | 82 * |
| Feb '15 | 3.80% | 11,446 | 802 | 3,922 | 3,072 | 6,668 | 537 | 217 | 766 | 2,457 * | 88 * |
| Mar '15 | 3.78% | 11,529 | 859 | 4,418 | 3,244 | 6,713 | 528 | 320 | 803 | 3,132 * | 80 * |
| Apr '15 | 3.69% | 11,725 | 954 | 4,508 | 3,303 | 6,975 | 520 | 254 | 779 | 3,107 * | 79 * |
| May '15 | 3.92% | 11,798 | 998 | 4,431 | 3,197 | 7,015 | 513 | 255 | 788 | 3,117 * | 72 * |
| Jun '15 | 4.08% | 12,058 | 1,083 | 4,370 | 3,067 | 6,896 | 593 | 165 | 822 | 3,603 * | 67 * |
| Jul '15 | 3.98% | 11,819 | 983 | 4,302 | 2,971 | 6,254 | 522 | 295 | 849 | 3,566 * | 69 * |
| Aug '15 | 3.96% | 11,661 | 979 | 4,006 | 2,828 | 5,909 | 486 | 277 | 930 | 3,195 * | 69 * |
| Sept '15 | 3.96% | 11,533 | 979 | 3,702 | 2,389 | 5,351 | 478 | 372 | 988 | 3,013 * | 67 * |
| Oct '15 | 3.86% | 11,411 | 998 | 3,928 | 2,580 | 5,281 | 465 | 321 | 934 | 2,877 * | 71 * |
| Nov '15 | 4.01% | 11,300 | 905 | 3,388 | 2,271 | 5,182 | 471 | 285 | 856 | 2,325 * | 68 * |
| Dec '15 | 4.02% | 10,634 | 819 | 2,939 | 2,006 | 4,472 | 397 | 529 | 802 | 2,639 * | 72 * |
| Jan '16 | 3.93% | 10,777 | 901 | 3,814 | 2,540 | 4,932 | 449 | 308 | 829 | 2,146 * | 76 * |
| Feb '16 | 3.75% | 10,696 | 1,054 | 3,918 | 2,747 | 5,424 | 461 | 256 | 744 | 2,415 * | 82 * |
| Mar '16 | 3.70% | 10,583 | 1,100 | 4,353 | 3,033 | 5,798 | 480 | 280 | 773 | 3,022 | 70 |
| ORRA Originated Sales | Average Mtg Rate | Total Inventory ** | Active With Contract | New Listings | New Contracts | Under Contract | Back on Market | Expired | Withdrawn | Sales Closed | Days on Market |

* Corrected monthly sales. ** Includes listings with a status of "Active with Contract."

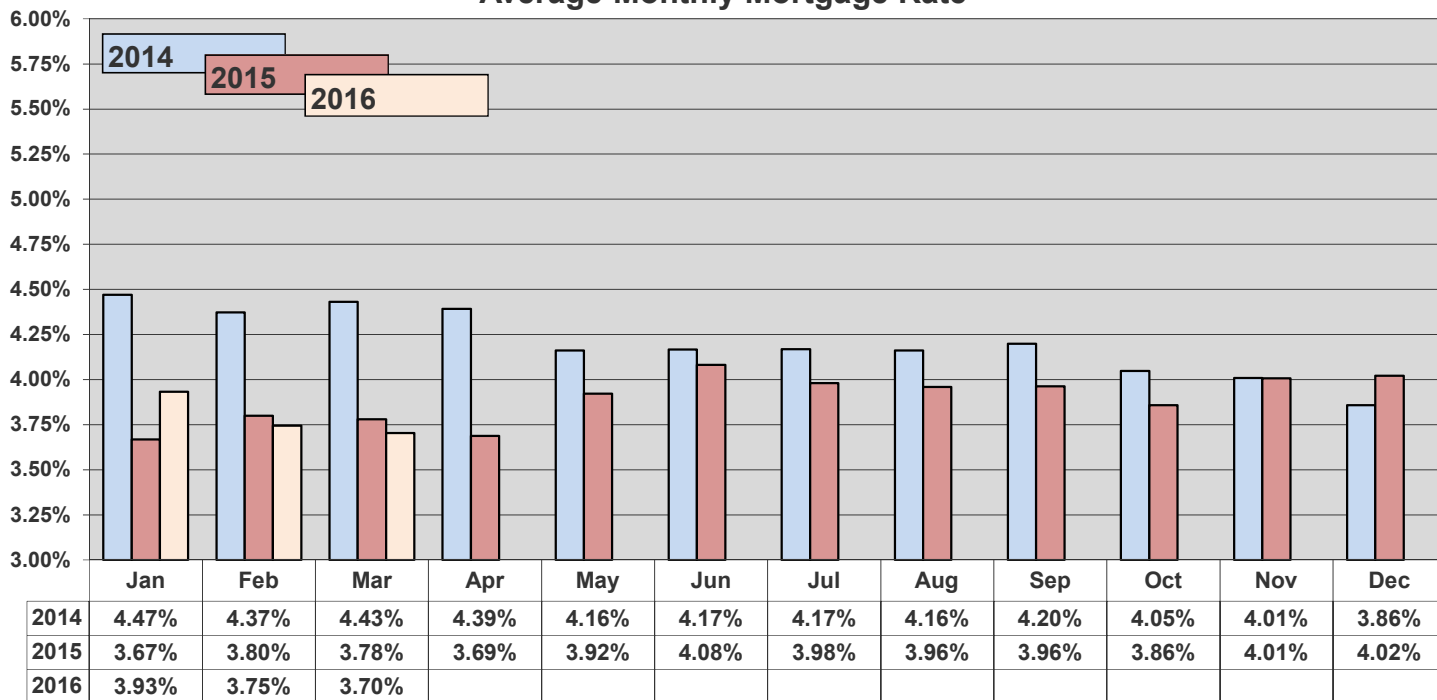
Complete stats and data may be found under Market Info at www.orlandorealtors.org. Comments or suggestions? Contact Mike Blinn, Statistician.

Market Pulse™ data represents all listings taken or sold by ORRA brokers, regardless of location and is exclusive to residential property, which includes townhomes, duplexes, single-family homes, and condos. It does not include vacant land or commercial transactions.

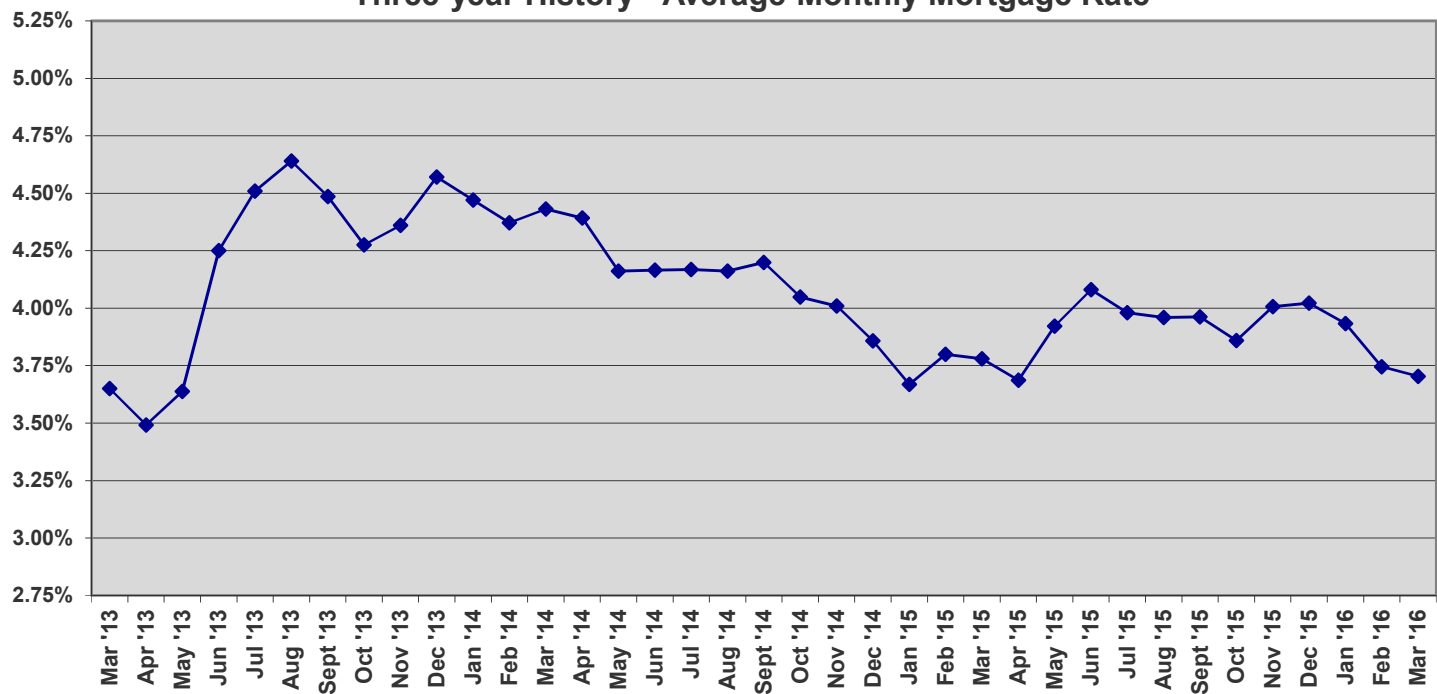




Average Monthly Mortgage Rate

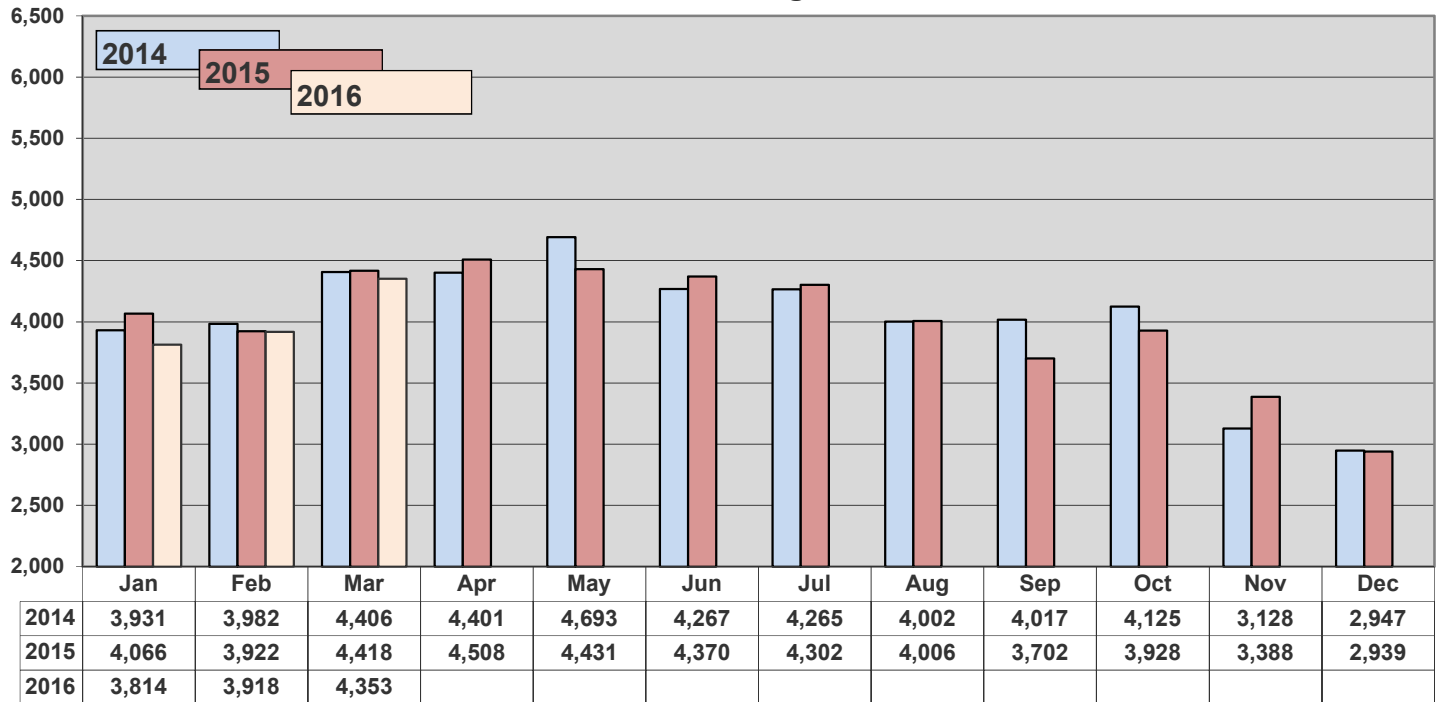


Three-year History - Average Monthly Mortgage Rate

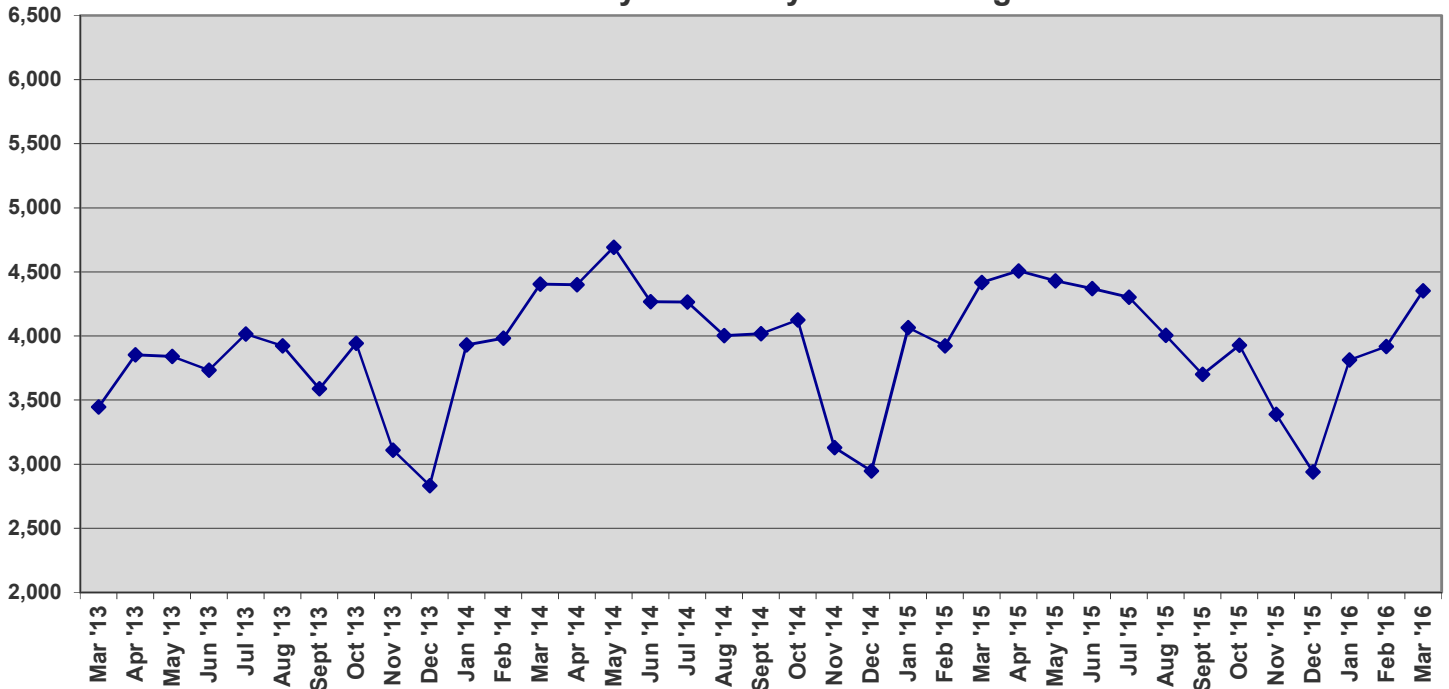




New Listings

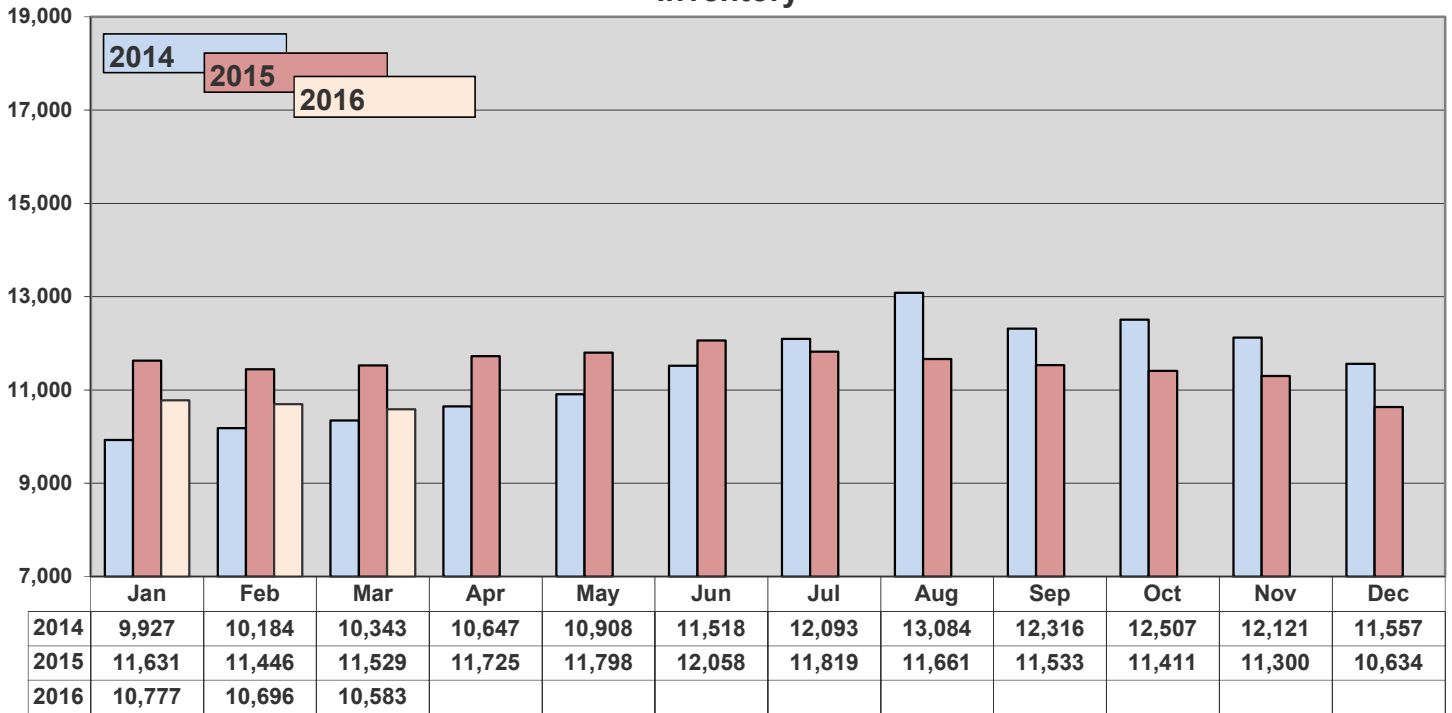


Three-year History - New Listings

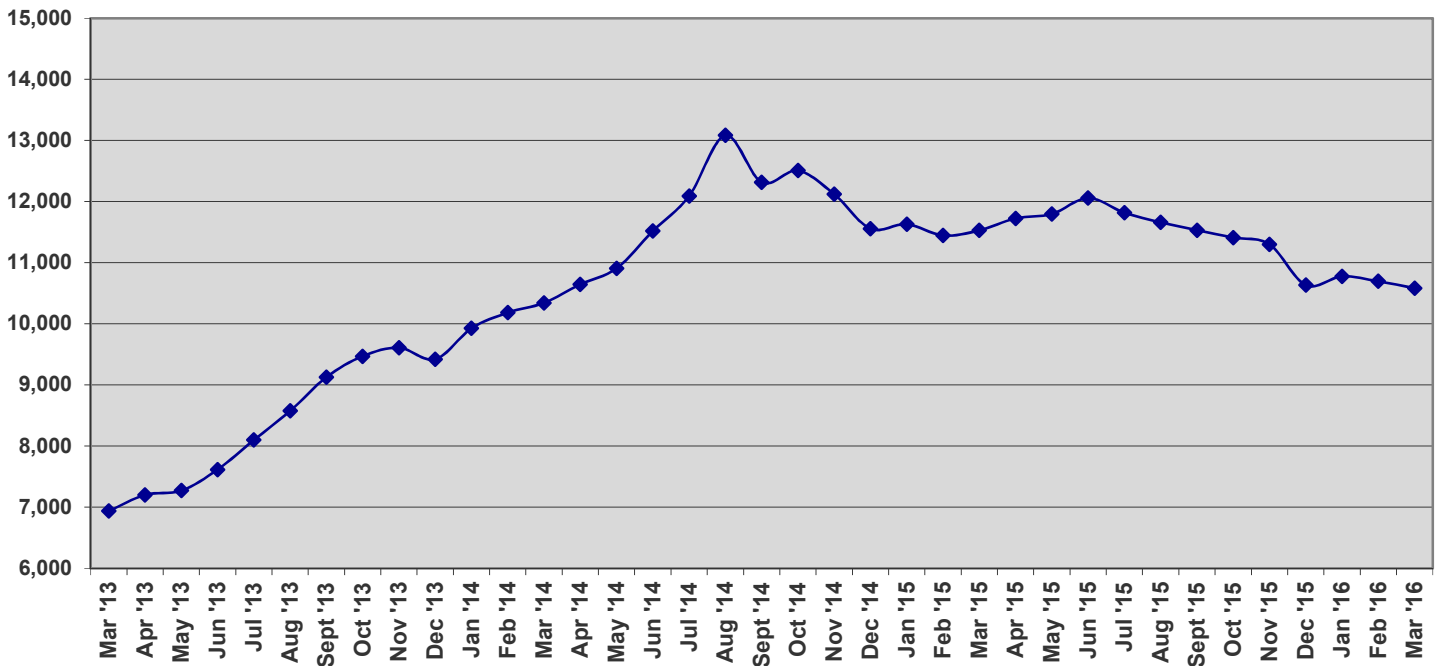




Inventory

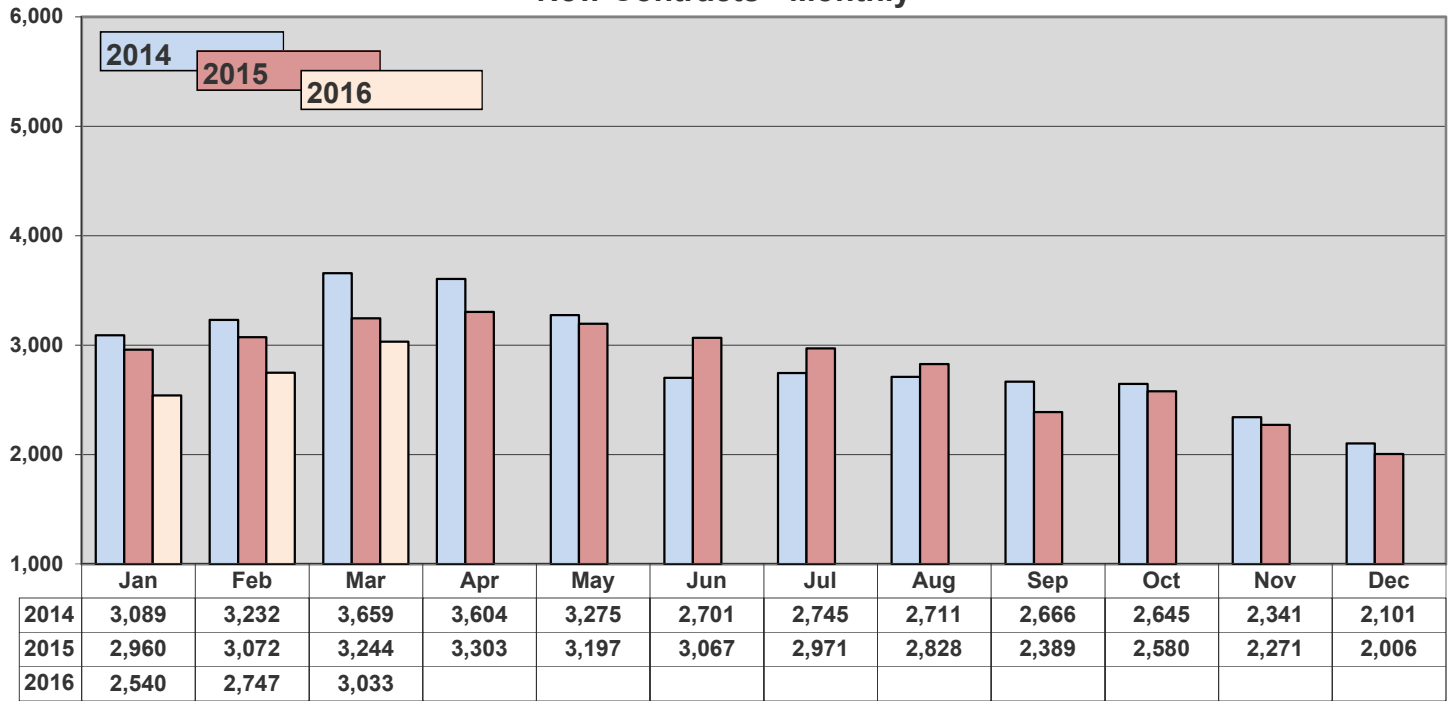


Three-year History - Inventory

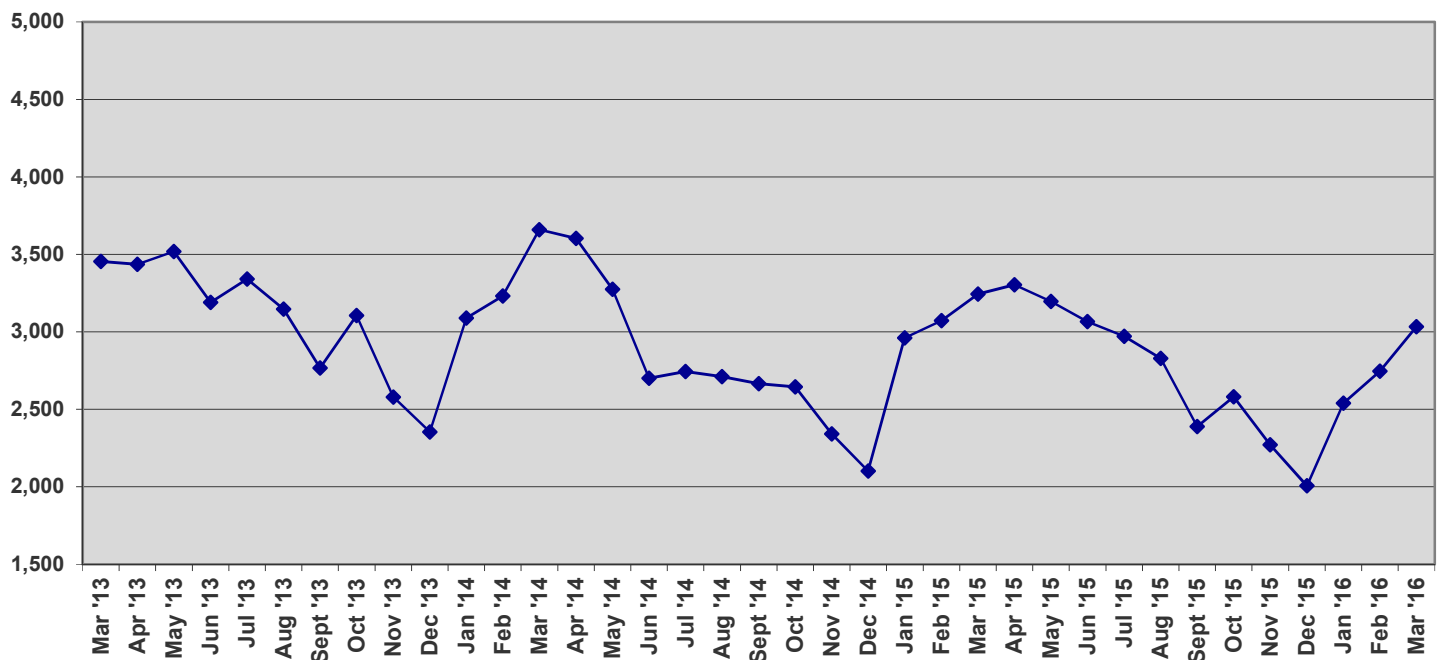




New Contracts - Monthly

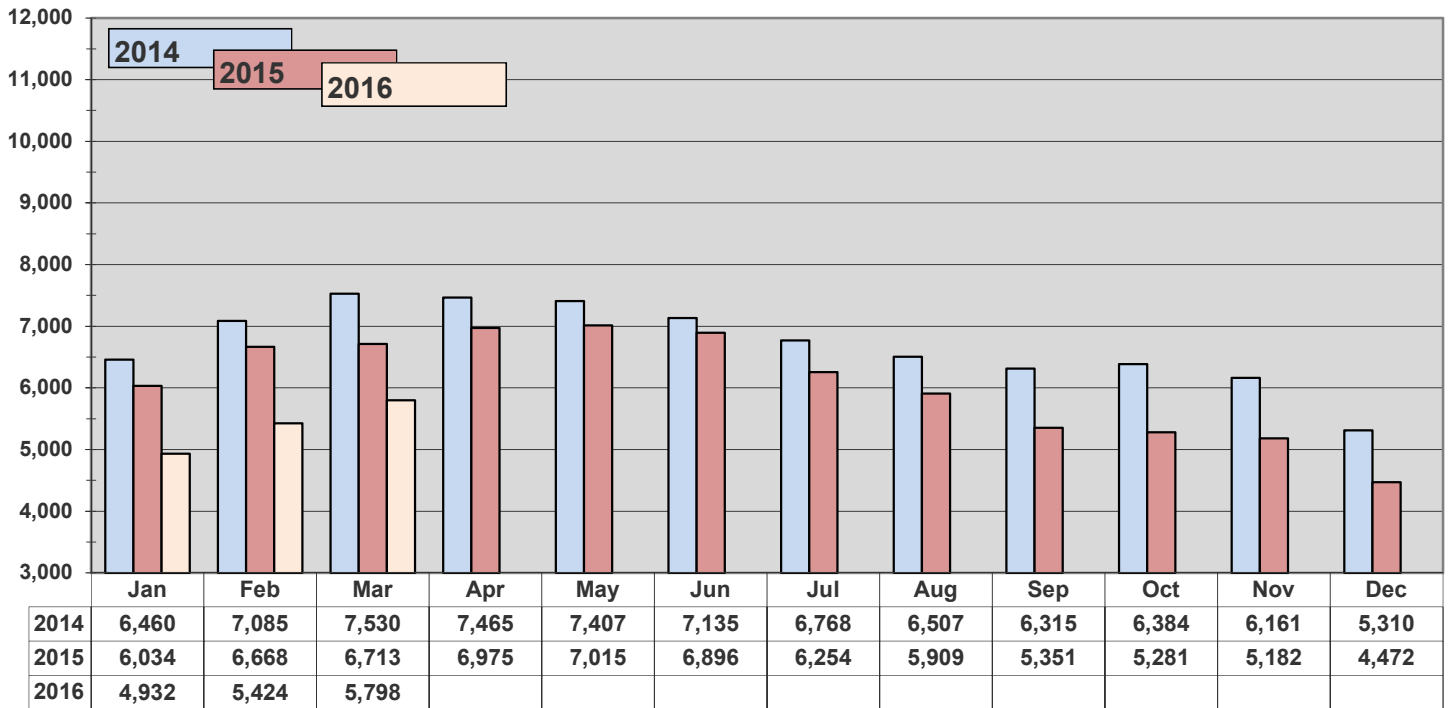


Three-year History - New Contracts

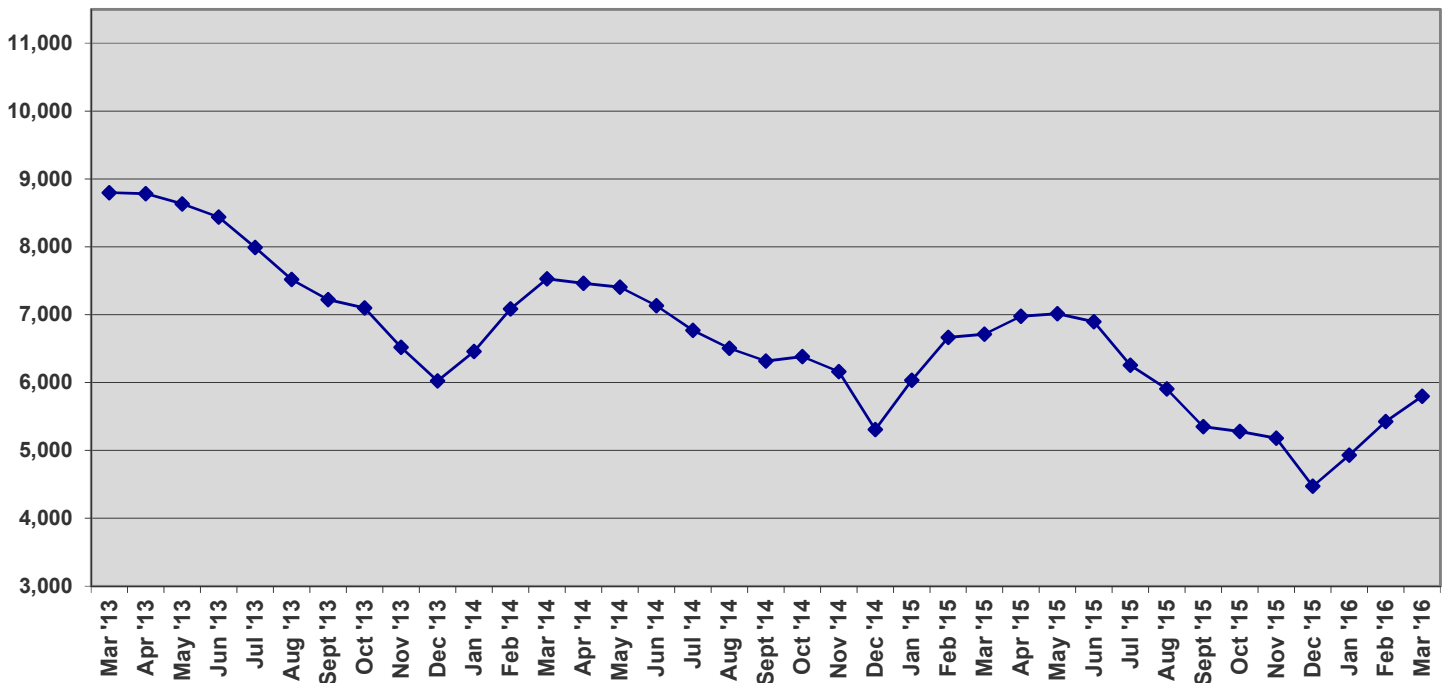




Total Under Contract

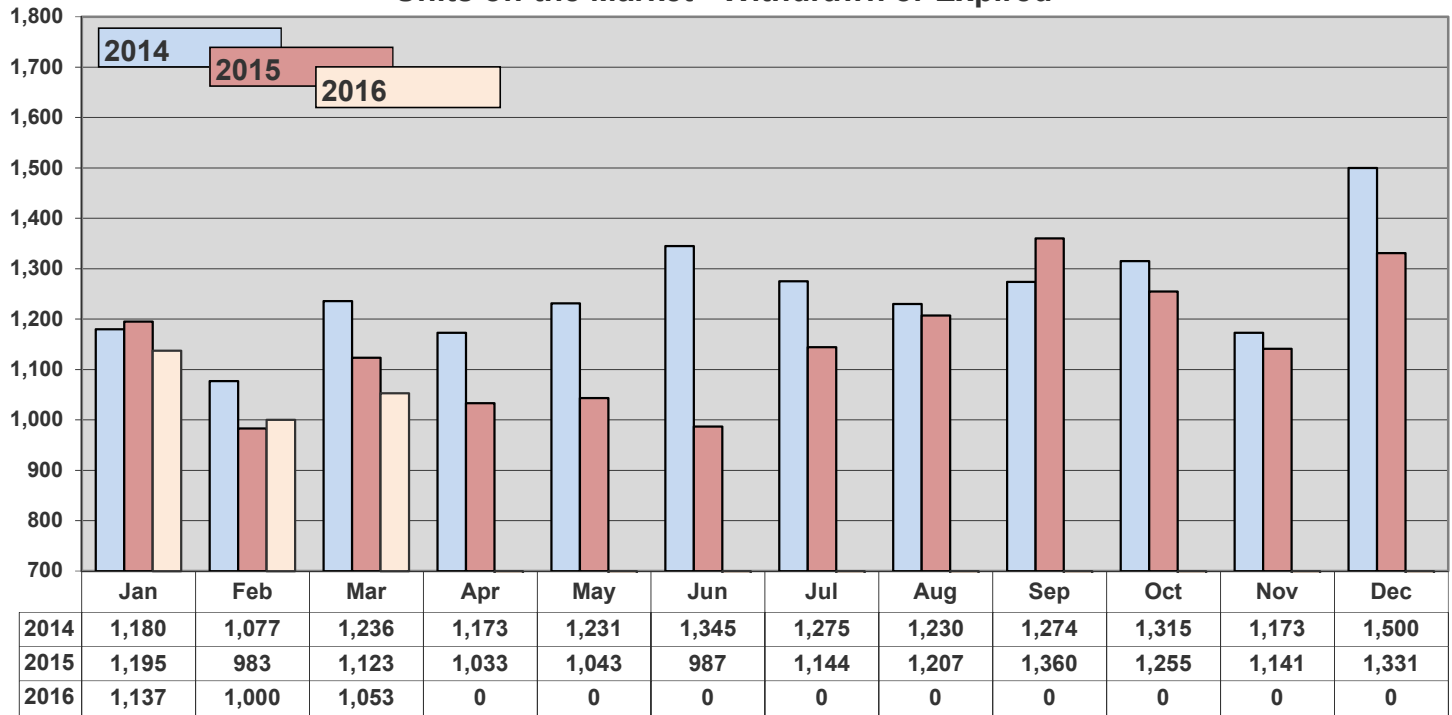


Three-year History - Monthly Total Under Contract

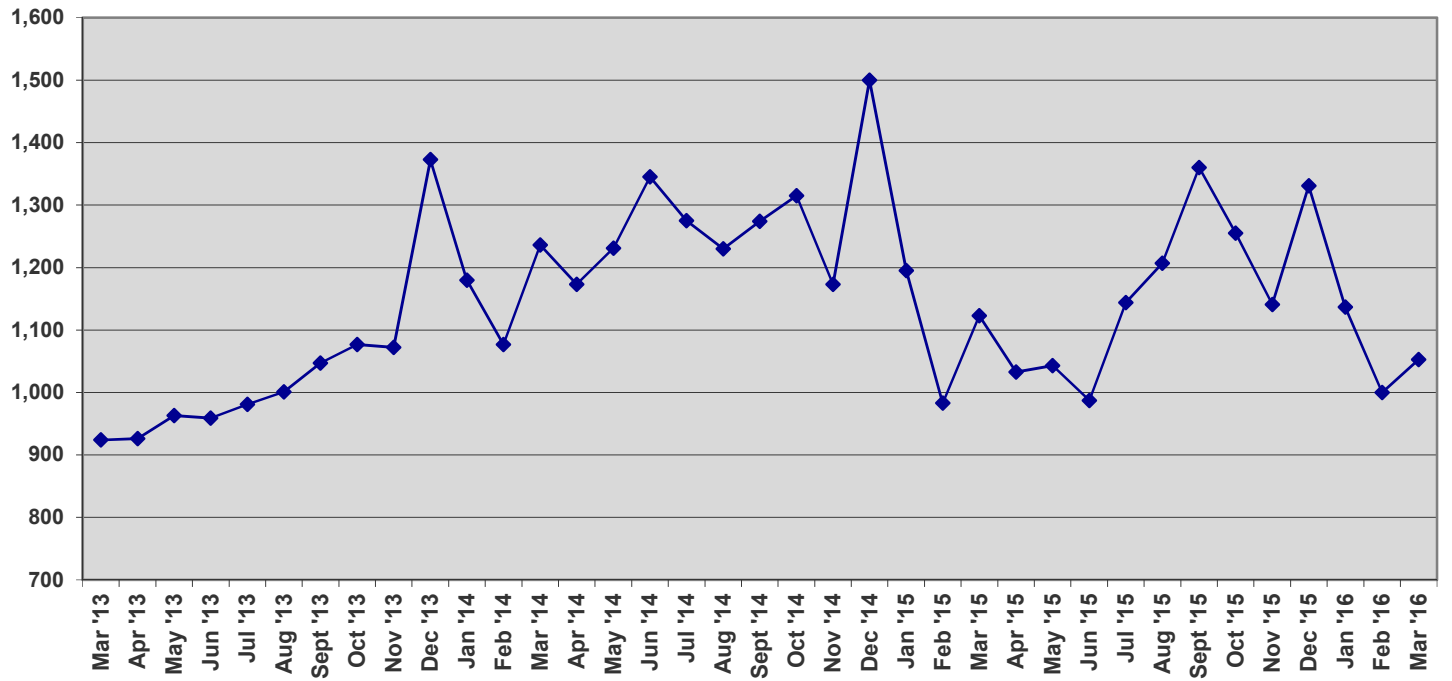




Units off the Market - Withdrawn or Expired

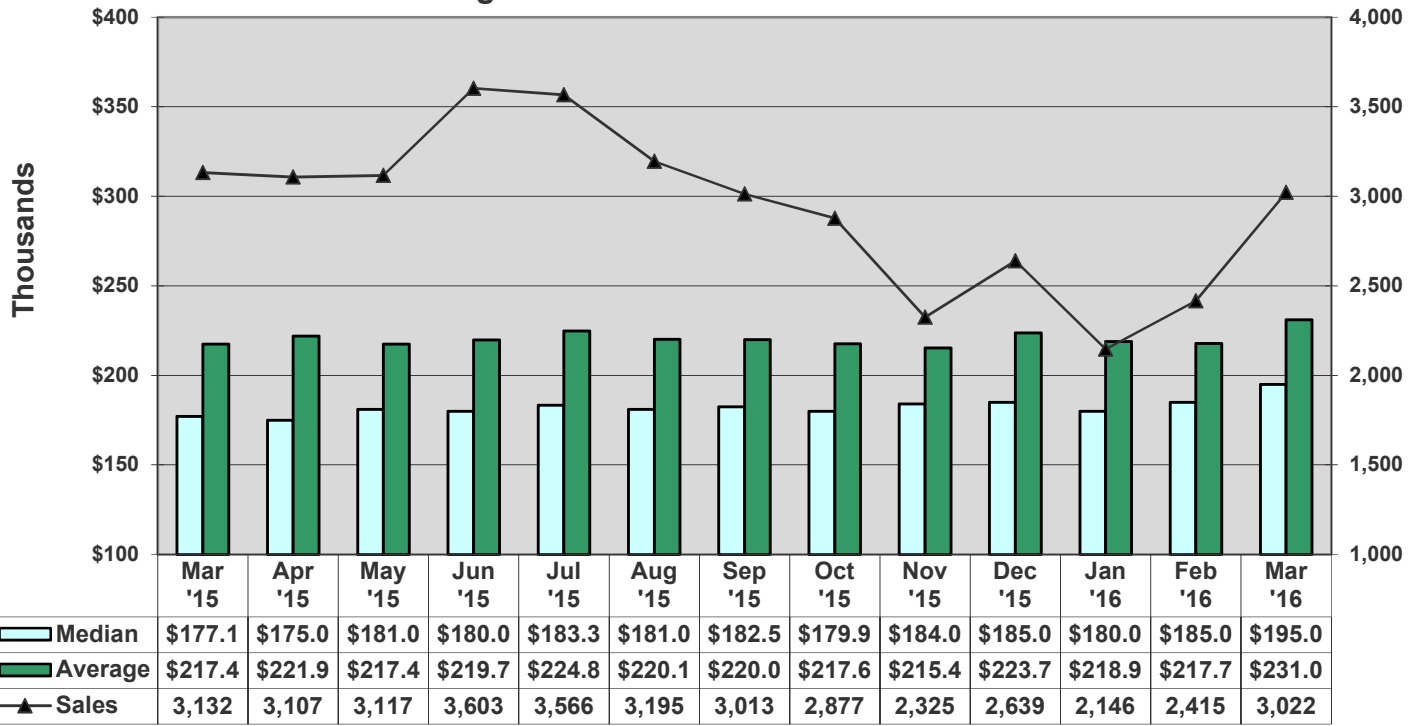


Three-year History - Units off the Market - Withdrawn or Expired

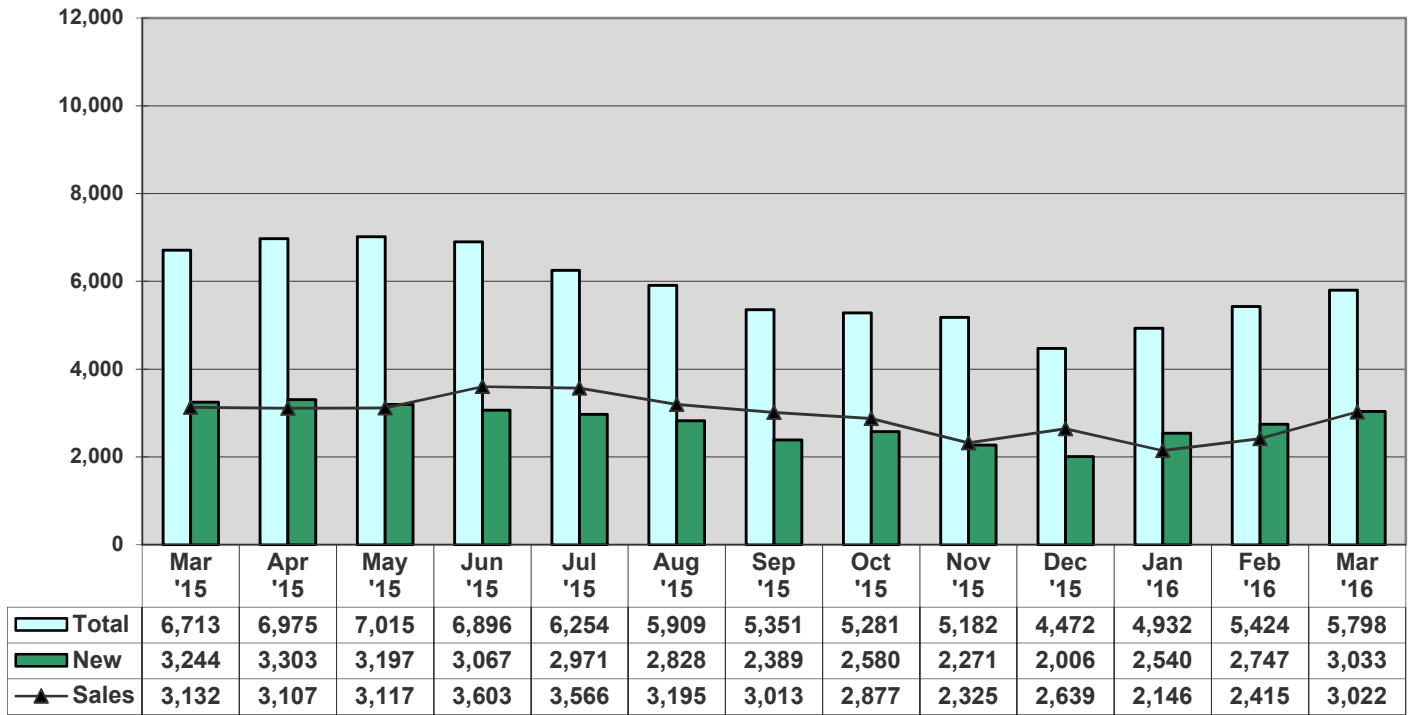




Average vs Median Sales Price vs Sales



Total Contracts vs New Contracts vs Sales





Average Days - Contract to Close

